



SANDERS MUSEUM SERVICES
founded in 1981

MUSEUM INSTALLATIONS and MOUNTMAKING

1991 - 2008



Featured Mountmaking Projects

THE BB KING MUSEUM AND DELTA INTERPRETIVE CENTER

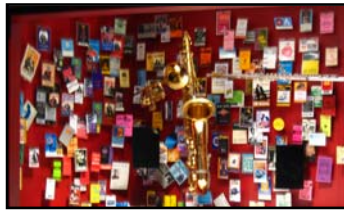
Indianola, MS

July to September 2008

Mounting Design, Artifact Mounting and Installation

Design, fabricate and install mounts for approx 400 artifacts including musical instruments, documents, record albums, garments and a 16' boat

PERMANENT COLLECTION



LIBERTY MEMORIAL MUSEUM

Official WWI Museum

Kansas City, MO

June-November, 2006

Mounting Design, Artifact Mounting, and Installation

Design, fabricate and install mounts for approx 1000 artifacts including firearms, uniforms, documents, and ethnographic objects.

PERMANENT COLLECTION
New Museum



MOUNT VERNON EDUCATIONAL CENTER

Mt Vernon, VA

August 2005 - August 2006

Mounting Design, Artifact Mounting, and Installation

Design, fabricate and install mounts for approx 200 artifacts including firearms, documents, and ethnographic objects

PERMANENT EXHIBIT
New Museum



**AMHERST COLLEGE
Geology Museum
Amherst, MA
January - May, 2006**



***Mounting Design,
Artifact Mounting, and Installation***

Design, fabricate and install mounts for approx 1500 artifacts including heavy mineral specimens and fossils.

**PERMANENT EXHIBIT
New Museum**



**THE CLINTON PRESIDENTIAL MUSEUM AND LIBRARY
Little Rock, Arkansas
November 2004**



***Unpacking and Cataloging Mounting Design,
Artifact Mounting, and Installation***

Design, fabricate and install mounts for approx 650 Presidential artifacts, including awards, garments, flags, musical instruments, weapons, books and documents, and memorabilia.

**PERMANENT COLLECTION
New Museum**



**NATIONAL MUSEUM OF THE AMERICAN INDIAN
SMITHSONIAN INSTITUTION
Washington, DC
March 2003- September 2004**



***Mounting Design,
Artifact Mounting, and Installation***

Design, fabricate and install mounts for approx 3000 Native American artifacts including Archaeological points, beaded ethnographic objects, qeros and containers. Sanders Museum Services was involved with implementing and installing Smithsonian staff designer's new and innovative case designs.

**PERMANENT COLLECTION
New Museum**





MISSOURI HISTORICAL SOCIETY
St. Louis, Missouri
Lewis and Clark Traveling Exhibit
 August 2003- January 2004

*Conservation Assessment,
 Mount System Design, Mounting Design,
 Artifact Mounting, and Installation*

Conservation assessment and consultation for artifact handling of 500 artifacts and objects. Designing, fabricating, and installing traveling mounting system and mounts for Lewis and Clark Bicentennial five year, five venue traveling exhibition.

TRAVELING EXHIBIT



The Peabody Essex Museum
THE YIN YU TANG HOUSE
 Salem, Massachusetts
 June 2003

*Mounting Design,
 Artifact Mounting, and Installation*

Design, fabricate, and install mounts for approximately 400 objects. The Yin Yu Tang House was disassembled in China and brought to Salem, reassembled, and the household artifacts were reinstalled exactly as they had been left during the Cultural Revolution. SMS was responsible for invisibly securing all objects in the house, including furniture, dishes, art works, utensils, and tools.

PERMANENT COLLECTION
New Museum



INTERNATIONAL SPY MUSEUM
Washington, DC
 November 2001-June 2002

*Mounting Design,
 Artifact Mounting, and Installation*

Design, fabricate, and install mounts for approximately 800 objects, including documents, books, mechanical devices and gadgets. Many of these objects are being displayed as multiple parts in dynamic displays.

PERMANENT COLLECTION
New Museum



SANDERS ASSOCIATES

THE NASHER MUSEUM OF ART
Duke University
Durham, NC
May 2008

Mounting Design,
Artifact Mounting and Installation

Design, fabricate and install mounts for approx 25 artifacts of fragile Mayan sculptures.

TEMPORARY COLLECTION



KENNEDY SPACE CENTER
ASTRONAUT HALL OF FAME
Cape Canaveral, FL
April 2008

Mounting Design,
Artifact Mounting and Installation

Design, fabricate and install mounts for approx 75 artifacts including space suits and other astronaut paraphernalia.

PERMANENT EXHIBITS
New Wing of Museum



SPORTS MUSEUM OF AMERICA
Manhattan, NY
April 2008

Mounting Design,
Artifact Mounting and Installation

Design, fabricate and install mounts for approx 350 artifacts including garments, documents and sports paraphernalia.

PERMANENT AND CHANGING EXHIBITS
New Museum



GETTYSBURG VISITORS CENTER
Gettysburg, PA
January 2007 to April 2008

Mounting Design,
Artifact Mounting and Installation

Design, fabricate and install mounts for approx 800 artifacts including weapons, garments, leather bags, and other ethnographic artifacts.

PERMANENT COLLECTION
New Museum





GETTYSBURG VISITORS CENTER
Gettysburg, PA
February 2008 to April 2008

***Mounting Design,
Artifact Mounting and Installation***

Design, fabricate and install mounts and systems for approx 400 artifacts including weapons, musical instruments, belt buckles, and other ethnographic artifacts. SMS designed a mounting system to mount into pegboard for ease of installation.

ROTATING COLLECTION
New Museum



GETTYSBURG VISITORS CENTER
Gettysburg, PA
February 2008 to April 2008

***Mounting Design,
Artifact Mounting and Installation***

Design, fabricate and install mounts and systems for approx 150 artifacts including mostly documents for a temporary gallery

ROTATING COLLECTION
New Museum



BOALSBURG MILITARY MUSEUM
Boalsburg, PA
January, 2008

***Mounting Design,
Artifact Mounting and Installation***

Design, fabricate and install mounts for approx 40 military artifacts including firearms and uniforms.

PERMANENT EXHIBIT



CHAPMAN CULTURAL CENTER
Spartanburg, SC
June to September, 2007

***Mounting Design,
Artifact Mounting and Installation***

Design, fabricate and install mounts for approx 250 cultural artifacts including Native American artifacts, garments, paper ephemera and firearms.

PERMANENT EXHIBIT



**NATIONAL CONSERVATION TRAINING
CENTER**
Shepherdstown, WV
April 2007

***Mounting Design, Artifact Mounting and
Installation***

Design, mount and install a conservation garment
mount for Rachel Carson's graduation cap and gown.

PERMANENT EXHIBIT

**DUMBARTON OAKS
SACKLER GALLERY**
Sabaean Horse sculpture
Washington, DC
April 2007

Sculpture disassembly, crating, and reassembly

Apply rigging, detach torsion bars and remove each
section of sculpture, support for temporary storage and
transport. Reassemble to install in new display.



AMHERST COLLEGE
Geology Museum
Amherst, MA
January - March, 2007

Mounting Design and Artifact Mounting

Design, fabricate and install mounts for approx 40
fossils

PERMANENT COLLECTION
New Museum



THE NASHER MUSEUM OF ART
Duke University
Durham, NC
January 2007

***Mounting Design,
Artifact Mounting and Installation***

Design, fabricate and install mounts for approx 60
artifacts including stained glass panels, vases, jewelry,
and sculptures.

PERMANENT COLLECTION
New Museum

SELMA TO MONTGOMERY
National Historic Trail
Tuskegee Institute, AL
May-July, 2006

***Mounting Design,
Artifact Mounting, and Installation***

Design, fabricate and install mounts for approx 50
artifacts including garments and documents.

PERMANENT EXHIBIT
New Museum

BOALSBURG MILITARY MUSEUM
Boalsburg, PA
April-May, 2006

***Mounting Design,
Artifact Mounting, and Installation***

Design, fabricate and install mounts for approx 40
military artifacts including firearms and uniforms.

PERMANENT EXHIBIT
New Museum

**FORT SCOTT NATIONAL HISTORIC
SITE**

Fort Scott, KS
March- April 2006

***Mounting Design,
Artifact Mounting, Rigging and Installation***

Design, fabricate and install mounts for approx 25 artifacts including clothing, weapons, and other ethnographic artifacts.

PERMANENT COLLECTION



THE NASHER MUSEUM OF ART
Duke University
Durham, NC
February-October 2005

***Mounting Design,
Artifact Mounting, Rigging and Installation***

Design, fabricate and install mounts for approx 100 artifacts including stained glass panels, heavy sculptures, masks, jewelry, and other ethnographic artifacts.

PERMANENT COLLECTION
New Museum

**GUANA TOLOMATO MATANZAS
ESTUARINE RESERVE**

St Augustine, FL
September 2005

***Mounting Design,
Artifact Mounting, and Installation***

Design, fabricate and install drawer mounts for approx 200 artifacts including projectile points, pottery sherds, seeds, shells, and other marine items.



DUMBARTON OAKS
Antioch Mosaics
Washington, DC
June - August, 2005

***Design, planning, rigging fabrication and
mosaic installation***

Design and fabricate cart to transport mosaics. Design and fabricate rigging to support and lift three mosaics each weighing up to one ton. Lift and install the largest of the three thirteen feet above the floor and the other two below.

PERMANENT EXHIBIT



DUMBARTON OAKS
SACKLER GALLERY
Sabaeen Horse sculpture
Washington, DC
December 2004 - June 2005

Sculpture disassembly, crating, and reassembly

Fabricate blocking, apply rigging, detach torsion bars and remove each section of sculpture, support for temporary storage and transport. Reassemble to install in new display.

TEMPORARY EXHIBIT



SACKLER GALLERY
Yemeni Funerary Stones and Bas Relief
Washington, DC
June, 2005

Rigging, Artifact Mounting and Installation

Set up gantry frame, fabricate mounts for two standing stones and one bas relief and install.

TEMPORARY EXHIBIT

NATIONAL CONSERVATION TRAINING CENTER
Frame Replication
Shepherdstown, WV
June, 2005

Frame construction and surface treatment

Construct 24 aluminum frames and apply brushed surface treatment to match existing frames in display.

PERMANENT EXHIBIT



THE CLINTON PRESIDENTIAL MUSEUM AND LIBRARY
"A World of Music"
Little Rock, AR
May, 2005

Mount Design, Fabrication and Installation

Design, fabricate and install mounts for approximately 125 musical objects including musical instruments, photos, posters, CD cases and Elvisiana.

TEMPORARY EXHIBIT

PUBLIC MUSEUM OF GRAND RAPIDS
Collecting A-Z
Grand Rapids, Michigan
December 2004 - January 2005

Consultation, Mounting Design, Artifact Fabrication, and Installation

Design, fabricate and install mounts for weapons, textiles, rocks and minerals, approximately 70 items.

PERMANENT EXHIBIT



CINCINNATI REDS HALL OF FAME
Cincinnati, Ohio
September - October 2004

Mounting Design, Artifact Mounting, and Installation

Design, fabricate and install mounts for approx 600 Baseball artifacts including uniforms, banners, books, documents, and other memorabilia.

PERMANENT COLLECTION
New Museum



ZIIBIWING CENTER OF ANISHINABE CULTURE AND LIFEWAYS
The Ziibiwing Nation
Mount Pleasant, MI
July - August 2004

Mounting Design, Artifact Mounting, and Installation

Design, fabricate, and install artifact mounts for 350 objects, including tools, clothing, pottery, and other historical objects.

PERMANENT COLLECTION
New Museum

THE OREGON HISTORY MUSEUM
Portland, Oregon
July, August 2004

Mounting Design, Artifact Mounting, and Installation

Design, fabricate and install mounts for approx 500 Ethnographic and historical objects, including implements, garments, tools, specimens, books and documents, and weapons.

PERMANENT COLLECTION
New Museum



UTAH FIELD HOUSE
Vernal, Utah
Completion April 2004

Mounting Design, Artifact Mounting, and Installation

Design, fabricate, and install complex ethnographic objects and large fossils.

PERMANENT EXHIBIT

SAINT LOUIS ART MUSEUM
Art of the Osage
St. Louis, MO
January-March 2004

Mounting Design, Artifact Mounting, and Installation

Design, fabricate and install mounts for approx 25 artifacts including textiles, weaponry, carvings, and other artifacts.

TEMPORARY COLLECTION

NATIONAL TRACK AND FIELD HALL OF FAME
New York, New York
Completion January 2004

Mounting Design, Artifact Mounting, and Installation

Design, fabricate, and install textile and garment mounts, ball supports, document and book mounts for approximately 120 objects.

PERMANENT EXHIBIT

NATIONAL LIBRARY OF HEALTH
Changing the Face of Medicine: Celebrating America's Women Physicians
Bethesda, MD
June-October 2003

Mounting Design, Artifact Mounting, and Installation

Design, fabricate and install mounts for approx 125 artifacts including books, documents, medical instruments, and other memorabilia.

TEMPORARY COLLECTION

MARYLAND MUSEUM of AFRICAN AMERICAN HISTORY and CULTURE
Baltimore, Maryland
January 2001 July 2003

Systems Analysis, Artifact Care and Case Design Consultation

Bradley Sanders and Staff will analyze the Interpretive Master Plan of the Owner, and consult as an advocate of the artifacts on behalf of the Owner and the Museum Design Team. SMS will produce a set of recommendations regarding the welfare of the artifacts in the proposed exhibit situation, and offer suggestions for enhancing the process of selecting an Artifact Handling Staff both during and after the first installation.

PERMANENT COLLECTION
New Museum

**JOSEPHINE SCHOOL COMMUNITY
MUSEUM**
Berryville, VA
January-June 2003

***Mounting Design,
Artifact Mounting, and Installation***

Design, fabricate and install mounts for approx 100 artifacts including books, documents, photos, furniture, and other memorabilia.

PERMANENT COLLECTION

**FAIRFAX MUSEUM AND VISITOR
CENTER**
Fairfax, VA
March-June 2003

***Mounting Design,
Artifact Mounting, and Installation***

Design, fabricate and install mounts for approx 50 artifacts including militaria, textiles, books, documents, and other memorabilia.

PERMANENT COLLECTION

**NATIONAL PARK SERVICE
Pipe Spring National Monument**
Fredonia, AZ
March-May 2003
***Mounting Design,
Artifact Mounting, and Installation***

Design, fabricate and install mounts for approx 15 artifacts including Native American artifacts and militaria.

PERMANENT COLLECTION



FILSON HISTORICAL SOCIETY
Louisville, Kentucky
March-May 2003

Artifact Matting, Framing, and Installation

Fabricate and install mats and frames for approx. 50 documents.

TEMPORARY EXHIBIT

SHEPHERDSTOWN CIVIL WAR EXHIBIT
Historic Shepherdstown
Shepherdstown, WV
March-April, 2003

***Mounting Design,
Artifact Mounting, and Installation***

Design, fabricate and install mounts for approx. 100 photos. Design, fabricate and install labels to accompany photos.

PERMANENT COLLECTION

TUDOR PLACE
Georgetown, DC
April 2003

***Mounting Design,
Artifact Mounting, and Installation***

Design, fabricate and install mounts for approx. 40 archaeological objects.

PERMANENT COLLECTION

NATIONAL LIBRARY OF HEALTH
Dream Anatomy
Bethesda, MD
August-October 2002

***Mounting Design,
Artifact Mounting, and Installation***

Design, fabricate and install mounts for approx 40 books and documents.

TEMPORARY COLLECTION

DRUG ENFORCEMENT AGENCY
Target America
Arlington, VA
July-September 2002

***Mounting Design,
Artifact Mounting, and Installation***

Design, fabricate and install mounts for approx 75 artifacts including drug paraphernalia, documents, clothing, bottles and various objects.

TRAVELING EXHIBIT



**NAISMITH MEMORIAL BASKETBALL
HALL of FAME**
Springfield, Massachusetts
January 2002 – September 2002

***Mounting Design, Artifact Mounting, and
Installation***

Design, fabricate, and install textile and garment mounts, ball supports, document and book mounts for approximately 1,100 objects.

PERMANENT COLLECTION
New Museum



**SMITHSONIAN INSTITUTION
TRAVELING EXHIBITION SERVICE**
Washington, DC
Lunch Box Memories Exhibition

***Mounting Design,
Artifact Mounting, and Installation***

Designing, fabricating, and installing traveling security mounts for 72 antique metal lunchboxes.

TRAVELING EXHIBIT

BUCKSKIN DRESS MOUNT
National Park Service
Harpers Ferry, West Virginia
June 2002

Mount Design, Fabrication, & Installation

Designed, fabricated, and installed special conservation for Buckskin Dress.

PERMANENT COLLECTION



LIBERTY MEMORIAL MUSEUM
Kansas, Missouri
May 2002

***Mounting Design, Artifact Mounting and
Installation***

Designed, fabricated, and install custom mounts for approximately 175 artifacts. These artifacts range were mostly WWI objects, including bombs, uniforms, and other war items. These two large exhibit rooms are public “teasers” for a 132,000 sq. ft. Museum presently under construction on site. SMS has been offered the mountmaking contract on this museum on the basis of our performance and product quality.

PERMANENT COLLECTION
Preface for New Museum



INDIANA STATE HISTORY MUSEUM
Indianapolis, Indiana
September 2001 – June 2002

***Mounting Design,
Artifact Mounting, and Installation***

Designed, fabricated, and installed both custom mounts and systematic problem solving mounting solutions for 1,800 artifacts. These artifacts range from 900 lb mineral specimens to pop culture objects, fossils, archeological artifacts and ethnographic objects.

PERMANENT COLLECTION
New Museum





THE MASONIC TEMPLE
Washington, DC
Americanism Gallery, Supreme Council
April 2002

*Mounting Design,
Artifact Mounting, and Installation*

Designed, fabricated, and installed approximately 100 ethnographic artifact mounts.

PERMANENT COLLECTION

SMITHSONIAN INSTITUTION
Washington, DC
Gem and Mineral Specimens
Gift Store Display
February-March 2002

*Layout Design, Mounting Design,
Artifact Mounting, and Installation*

Provided organization of contents, Design Layout
Designed, fabricated, and installed a Mineral Specimen Mounting System for 45 Large Gem and Mineral Specimens. This system was subsequently used for large specimens in the Indiana State Museum Installation.

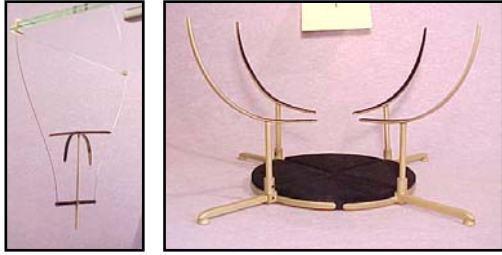


COPIA
The American Center for Food, Wine, and the
Arts
Napa, California
September–November 2001

*Mounting Design,
Artifact Mounting, and Installation/*

Designing, fabricating, and installing mounts for approximately 200 artifacts: Antiquities, books, ethnographic artifacts, archaeological artifacts, sculpture.

PERMANENT COLLECTION
New Museum



**NATIONAL MUSEUM of the AMERICAN
INDIAN**
The Smithsonian Institution
Washington, DC

GLASS SHELF EXHIBITS
Modular and Systematic Approach to
changing exhibits

July–November 2001

*Object and Systems Analysis, Artifact Mount
Design and Fabrication of Models*

Analyzed Collection area of the Museum of the American Indian. Provided designs for installation systems to be used for extensive rotating exhibits (2000 objects) to be installed on glass shelves in the new NMAI building on the Mall.

SMS was given 7 representative artifacts, designed 3 ways of mounting each, fabricated and tested 21 prototypes, and presented our findings in a demonstration to the Conservation Staff at MNAI.

PERMANENT COLLECTION
New Museum



MASONIC TEMPLE
Washington, DC
August 2001-September 2001

*Layout Consultation, Mounting Design,
Artifact Mounting, and Installation*

Approximately 100 artifact mounts made for Books, Jewels, Pins, Documents, Aprons and other objects. The artifacts remained in cases for travel, requiring special mounts to sustain and support objects over time with travel. Consultation for case layouts was an important part of the project. SMS worked with the curator, designer and exhibit company to ensure safe mounting and exhibition procedures for these objects during travel.

TRAVELING EXHIBIT



**PANHANDLE PLAINS
HISTORY MUSEUM**
Canyon, Texas
May-August 2001

*Case Design and Layout, Mounting Design,
Artifact Mounting, and Installation*

Provided organization of Case contents, Design Layout of Cases. Designed, fabricated, and installed approximately 700 artifact mounts; ethnographic and archaeological.

PERMANENT COLLECTION



BOB BULLOCK
TEXAS STATE HISTORY MUSEUM
Austin, Texas
Oct 2000 – April 2001

*Mounting Design,
Artifact Mounting, and Installation*

Designed, fabricated, and installed approximately 700 artifact mounts; ethnographic and archaeological.

PERMANENT COLLECTION
NEW MUSEUM





**WALTERS GALLERY of ART
Baltimore, Maryland
July 2000 – Dec 2000**

***Monumental Mounting Design,
Task Engineering
Stone Artifact Mounting, and Installation***

Designed, fabricated, and installed steel armatures for 2 Monumental Stone Bas-reliefs, Egyptian and Assyrian. Bas-Reliefs are in many pieces, requiring specialized holding, moving, and mounting techniques.

Mounted several architectural keystones and elements into Permanent Exhibit Walls.

Provided Specialized Gantry and rigging equipment for installation of Artifacts weigh 500-2500 lbs.

PERMANENT COLLECTION



**NATIONAL MUSEUM of the AMERICAN
INDIAN
The Smithsonian Institution
Washington, DC**

**45 PLAINS INDIAN SHIRTS
August-November 2000**

***Systems Analysis, Artifact Mount and Design
Consultation***

Analyzed Collection of 45 Plains American Indian Shirts made of delicate leather and beads. SMS provided mounts that were easily accessible by the garment neck; each with articulating arms. These mounts had to be easily changed and virtually invisible without causing harm to the garments.

TRAVELING EXHIBIT

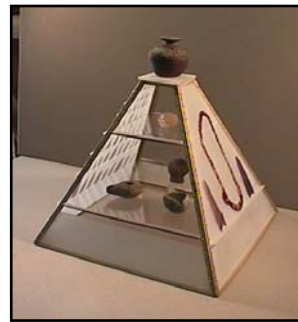


**The NATIONAL ARCHIVES
Washington, DC
The Constitution of the United States
September 2000**

***Mounting Design,
Artifact Mounting, and Installation***

Designed, fabricated, and installed a stainless steel mount for the second page of the original U.S. Constitution and its containment system, as well as other document containment systems and artifacts.

TEMPORARY EXHIBIT



**SAM NOBLE OKLAHOMA MUSEUM
of NATURAL HISTORY
Norman, Oklahoma
June 1999 to July 2000**

***Case Design and Layout, Mounting Design,
Artifact Mounting, and Installation***

Provided organization of Case contents, Design Layout of Cases.

Designed case layouts for approximately 1000 ethnographic and archaeological artifacts.

**TEMPORARY COLLECTION
New Museum**





**SAM NOBLE OKLAHOMA MUSEUM
of NATURAL HISTORY**
Norman, Oklahoma
June 1999 to August 2000

*Mounting Design,
Artifact Mounting, and Installation*

Designed, fabricated, and installed approximately 1200 ethnographic and archaeological artifact mounts.

PERMANENT COLLECTION
New Museum



**The NATIONAL
MUSEUM of NATURAL HISTORY**
Smithsonian Institution
Washington, DC

“VIKINGS”
The North Atlantic Saga
January-April, 2000

*Artifact Mount Design, Fabrication, and
Installation*

Designed, fabricated, and installed mounts for approximately 570 artifacts: Tools, books, and ethnographic artifacts, jewelry, archaeological artifacts, sculpture, and weapons. SMS staff were sponsored to travel to Sweden, Denmark, and Norway to pattern the artifacts from those countries.

TRAVELING EXHIBIT



**The NATIONAL
MUSEUM of NATURAL HISTORY**
Smithsonian Institution
Washington, DC

October 1999

“Galapagos Islands”
Artifact Mounting and Installation

Designed, fabricated, and installed mounts for approximately 40 artifacts: Drawings, books, ethnographic artifacts, costumes, archaeological artifacts, modern sculpture, and tools.

TEMPORARY EXHIBIT



**SCHOOL OF NURSING
UNIVERSITY OF BALTIMORE**
Baltimore, Maryland
September to October 1999

“Living History Museum”
Artifact Mounting and Installation

Designed, fabricated, and installed mounts for approximately 250 artifacts: Books and documents, medical instruments, costumes, hats.

PERMANENT COLLECTION



WINTERTHUR MUSEUM
Winterthur, Delaware
April to May 1999

“200 Years of Childhood”
*Mounting Design,
Artifact Mounting, and Installation*

Designed, fabricated, and installed 100 mounts for Children’s exhibit, including books, documents, paper dolls of the Napoleonic era, dolls, games, and toys.

PERMANENT COLLECTION



WINTERTHUR MUSEUM
Winterthur, Delaware
March to April 1999

“Fireplace Accessories”
*Mounting Design,
Artifact Mounting, and Installation*

Designed, fabricated, and installed 20 mounts for selection of fireplace artifacts distributed among the collection.

PERMANENT COLLECTION



PRIVATE CLIENT
Adamstein & Demetriou, Architects
Washington, DC
March to May 1999

“Brazilian Feather Garments”
Mount System Design, Fabrication, Installation

Designed a brass, stainless steel, and textile system which allows interchange of any of a selection of 100 feather costumes, neckpieces, headpieces, spears, and labrettes from a collection of approximately 1,000 artifacts. Production Designed and fabricated all elements of the system. Installation and deinstallation of artifacts to continue on an ongoing basis.

PERMANENT COLLECTION

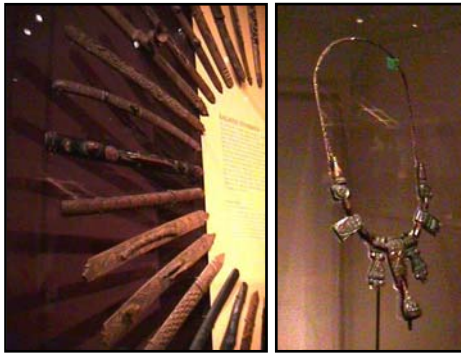


The NATIONAL INSTITUTE of HEALTH
National Museum of Medicine
Bethesda, Maryland
February to April 1999

“Breath of Life”
Artifact Mounting and Installation

Designed, fabricated, and installed mounts for approximately 125 artifacts: Drawings, books, scientific specimens, and scientific instruments.

TEMPORARY EXHIBIT



**The NATIONAL
MUSEUM of NATURAL HISTORY
Smithsonian Institution
Washington, DC
February to April 1999**

**“Ainu: Spirit of a Northern People”
*Artifact Mounting and Installation***

Designed, fabricated, and installed mounts for approximately 250 artifacts: Books, ethnographic artifacts, costumes, archaeological artifacts, modern sculpture, and tools.

TRAVELING EXHIBIT



**The ANACOSTIA MUSEUM
Smithsonian Institution
March 1999**

**“African Spiritual Exhibit”
*Mounting Design,
Artifact Mounting, and Installation***

Designed, fabricated and installed 20 artifact mounts for ethnographic artifacts.



**The IGFA WORLD FISHING MUSEUM
Ft Lauderdale, Florida
August to December 1998**

***Mounting Design,
Artifact Mounting, and Installation***

Designed, fabricated, and installed mounts for taxidermy fish specimens, fishing gear, documents, books, and other artifacts. Approximately 800 artifacts.

**PERMANENT COLLECTION
New Museum**

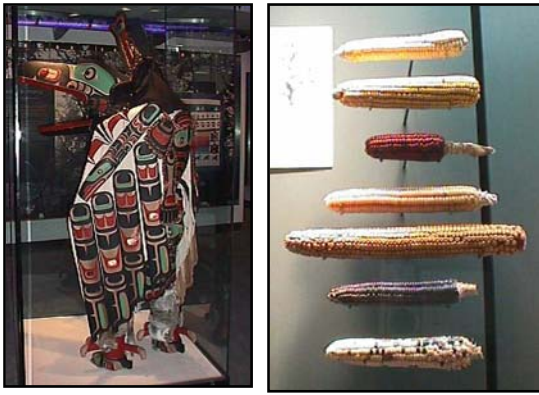


**VIRGINIA HISTORICAL SOCIETY
Richmond, Virginia
August to September 1998**

***Mounting Design,
Artifact Mounting, and Installation***

Designed, fabricated, and installed mounts for approximately 300 archaeological objects.

PERMANENT COLLECTION



**THE MASHANTUCKET PEQUOT
MUSEUM AND RESEARCH CENTER**
Mashantucket, Connecticut
February to August 1998

***Mounting Design,
Artifact Mounting, and Installation***

Designed, fabricated, and installed mounts for archaeological objects, textiles, wood, and iron implements, documents, books, and other artifacts.

New permanent collection for largest Native American Museum in U.S. Approximately 1,500 artifacts

PERMANENT COLLECTION
New Museum



The JEWISH HERITAGE MUSEUM
New York, New York
June 1997 to June 1998

***Mounting Design,
Artifact Mounting, and Installation***

Designed, fabricated, and installed 800 mounts for documents, books, textiles, household objects, religious objects, and Holocaust artifacts. Design, fabricate, and install mounts for rotated artifacts.

PERMANENT COLLECTION



PRINCETON UNIVERSITY
Princeton, New Jersey
September 1997 to Sept 1998

***Design, planning, rigging fabrication and
mosaic installation***

Created an armature for a full-sized Ceramic Sarcophagus from Clatzomenia. At receipt, the sarcophagus was in hundreds of pieces, which had to be supported individually and as a whole while being assembled. The armature was designed and gradually built over a year as the artifact was assembled, and at completion the package weighed over 2,500 lbs, and was hung vertically in the gallery.

PERMANENT EXHIBIT

DUMBARTON OAKS
Harvard University Byzantine Collection
Washington, DC
March to May, 1998

***“Byzantine Pottery and Glass”
Mount design, fabrication, and installation.***

Designed, fabricated, and installed brass and acrylic mounts for 50 pottery sherds and platters. Designed, fabricated, & installed fiber optic light box for display of Byzantine glass.

PERMANENT COLLECTION



WASHINGTON & LEE UNIVERSITY
Lexington, Virginia
March to May 1998

Lee Chapel
Mounting Design,
Artifact Mounting, and Installation

Designed, fabricated, and installed mounts for ceramics, textiles, wood and iron implements, documents, paintings, books, and other artifacts. New permanent collection of approximately 90 artifacts.

PERMANENT COLLECTION
New Museum

The NATIONAL INSTITUTE of HEALTH
National Museum of Medicine
Bethesda, Maryland
December 1997

“Frankenstein”
Artifact Mounting and Installation

Designed, fabricated, and installed mounts for approximately 35 artifacts: Drawings, objects of art, scientific specimens.

The NATURAL HISTORY MUSEUM
Smithsonian Institution
Washington, DC
May 1997

“Shops Exhibit”
Mounting Design,
Artifact Mounting, and Installation

Designed, fabricated, and installed 60 mounts for selection of artifacts exhibited in Shops Area.

PERMANENT COLLECTION

The WADSWORTH ATHENEUM
Hartford, Connecticut
1996

“The Colt Collection”
Mounting Design,
Artifact Mounting, and Installation

Designed, fabricated, and installed mounts for The Samuel Colt Collection. Designed, fabricated, and installed mounts for guns, documents, photographs, books, textile and paper objects, sculpture, medals and awards. Approximately 100 objects.

PERMANENT COLLECTION

The MARTIN LUTHER KING, Jr.
CENTER FOR NON-VIOLENCE
Atlanta, Georgia
June to July 1996

“Freedom Hall”
Exhibit Design,
Artifact Mounting, and Installation

Designed, Fabricated, and installed mounts for The Martin Luther and Coretta Scott King Collection. Designed layout and interior of cases. Mounted and installed documents, photographs, books, textile and paper objects, garments, sculpture, medals and awards. Approximately 75 objects.

PERMANENT COLLECTION

The NATIONAL INSTITUTE of HEALTH
National Museum of Medicine
Bethesda, Maryland
June 1996

“Eyes on Science”
Artifact Mounting and Installation

Designed, fabricated, and installed mounts for approximately 35 artifacts: Drawings, objects of art, scientific specimens.

TEMPORARY EXHIBIT

The NATIONAL ARCHIVES
Washington, DC
1995-1996

“Gifts to the President”
Artifact Mounting and Installation

Designed, fabricated, and installed mounts for approximately 200 Gifts to US Presidents from Roosevelt to Clinton.

TRAVELING EXHIBIT

DUMBARTON OAKS
Harvard University Collection
Washington, DC
October 1995

“Byzantine Collection”
Mount Retrofit, Fabrication, Installation

Fabricate mounts for pottery artifacts.

LONGWOOD GARDENS
Kennet Square, Rhode Island
August 1995

“Dupont Collection”
Mount Design, Fabrication, Installation

Designed, fabricated, and installed mounts for approximately 100 personal and historic effects of the Dupont Family.

PERMANENT COLLECTION

NATIONAL FOOTBALL HALL OF FAME
Dayton, Ohio
June to July 1995

Mount Design, Fabrication

Fabricate approximately 50 artifact mounts.

PERMANENT COLLECTION

DUMBARTON OAKS
Washington, DC
March 1995

Byzantine Collection
“Byzantine Pottery”
Mount design, fabrication, and installation.

Designed, fabricated, and installed brass and acrylic mounts for 40 pottery sherds and platters.

TEMPORARY EXHIBIT

NORTHERN INDIANA HISTORICAL SOCIETY
South Bend, Indiana
1994

Mount Design, Fabrication and Installation

Designed, fabricated, and installed artifact mounts for 800 objects, including fossils, machinery, household items, books and documents, tools, and weapons.

PERMANENT COLLECTION
New Museum

DICKSON MOUNDS VISITORS CENTER
Dickson Mounds, Wyoming
September 1994

Mount Design, Fabrication, Installation

Designed and fabricated artifact mounts for 50 objects.

PERMANENT COLLECTION

NATIONAL GALLERY OF ART
Conservation Division
Washington, DC
1994

“Crucifix Sculpture”
Conservation Mounting

Designed, fabricated, and installed steel wall mount fixture for damaged wooden cross with bronze crucifixion. Approximately 4' x 3'.

WASHINGTON NATIONAL ZOO
Washington, DC
December 1992

“Reptile Discover Center Exhibit”
Artifact Mounting

Designed, fabricated, and installed in cases matching mounts for snake and turtle heads for National Zoo and two other zoos.

PERMANENT COLLECTION

COAST GUARD MUSEUM
Ocean City, Maryland
August 1992

Mount Design, Fabrication, Installation

Designed, fabricated, and installed approximately 50 artifacts.

PERMANENT COLLECTION

COLBURN
GEM AND MINERAL MUSEUM
Asheville, North Carolina
July 1992

Mount Design, Fabrication, & Installation

Mounted approximately 300 mineral specimens from small stones to 200 lb mineral specimens.

PERMANENT COLLECTION
New Museum

**AFRICAN AMERICAN HISTORY
MUSEUM**
National Park Service
Harpers Ferry, West Virginia
July 1992

“African American History Exhibit”

Mount Design, Fabrication, & Installation

Designed, fabricated, and installed mounts and mount systems.

PERMANENT COLLECTION

THEODORE ROOSEVELT STATE PARK
North Dakota
April to July 1992

Mount Design, Fabrication, & Installation

Designed, fabricated, and installed mounts for Natural History and Ethnological Exhibit.

PERMANENT COLLECTION

SOUTHWEST VIRGINIA MUSEUM
Big Stone Gap, Virginia
April 1991 to June 1992

Artifact Conservation

Conservation of numerous artifacts in collection; based on Conservation Survey conducted by SMS.

PERMANENT COLLECTION

DESOTO WILDLIFE REFUGE
Missouri Valley, Iowa
May 1992

Mount System

Designed and fabricated mounting system for approximately 2,000 artifacts from river boat recovery.

PERMANENT COLLECTION

PUBLISHED

- “EXHIBITIONIST” MAGAZINE, FALL 1994
NATIONAL ASSOCIATION FOR MUSEUM EXHIBITION
AMERICAN ASSOCIATION OF MUSEUMS
-

TENNESSEE AQUARIUM
Chattanooga, Tennessee
March 1992

Mount Design, Fabrication, & Installation

Mounted permanent Folk Art Exhibit in lobby cases of aquarium. Mounted approximately 300 objects.

PERMANENT COLLECTION
New Collection

FORT CLATSOP NATIONAL PARK
Astoria, Oregon
1992

Mount Design, Fabrication, Installation

Mounted approximately 50 Native American artifacts.

PERMANENT COLLECTION

THE ROCKWELL MUSEUM
Corning, New York
1991

Multi-use Mount Design & Fabrication

Designed and fabricated an adjustable acrylic mount to be used for changing collection of Native American headdresses.

SOUTHWEST VIRGINIA MUSEUM
Big Stone Gap, Virginia
April to October 1991

Conservation Survey

Execute conservation and cleaning survey and recommend treatment for 300 artifacts.

PERMANENT COLLECTION
Renovated Museum

SOUTHWEST VIRGINIA MUSEUM
Big Stone Gap, Virginia
April to October 1991

Mount Design, Fabrication, and Installation

Designed, fabricated, and installed mounts for ceramics, textiles, wood, and iron implements, documents, paintings, books, and other artifacts. Overall museum renovation.

PERMANENT COLLECTION
New Museum

GETTYSBURG BATTLEFIELD PARK
Gettysburg, Virginia
September to October 1991

Exhibit Mount Fabrication and Installation

Fabricated and installed an exhibit based on old exhibitory made during and shortly after the Civil War.

PERMANENT COLLECTION

FSK MEDICAL CENTER
Baltimore, Maryland
July 1991

Security Mounting

Fabricate and install security mounts for 22 quilts.
Stretch 5 quilts and install all 27 quilts.

ANTIETAM VISITORS CENTER
Antietam, Maryland
June 1991

Mount Fabrication

Fabricated mounts for Civil War Artifacts. Renovation to one case.

PERMANENT COLLECTION

DUMBARTON OAKS
Harvard University Collection
Washington, DC
April 1991

“Byzantine Collection”
Conservation Consultation

Consultation on damage caused by vandal on Byzantine bronze horse sculpture, previously restored and mounted by SMS.

CONSULTATION CONSERVATION
